

View this case study online

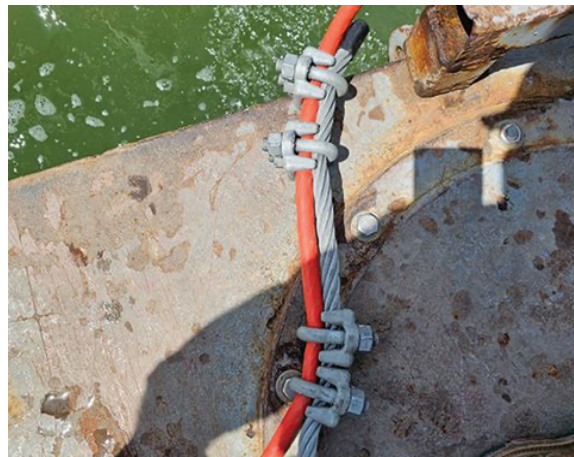
RETROLINKS™ INSTALLED ON DOCK STRUCTURES: HOUSTON SHIP CHANNEL, TEXAS

Two RetroLinks™ installed on dolphins.

Deepwater was contracted to provide a cathodic protection retrofit of the Enterprise dock structures at the Houston ship channel Jacinto Port Enterprise facility following an inspection report in which Deepwater had documented deficiencies of the CP systems.

For Dock 4/5, the southernmost 48" mooring dolphin and 36" northernmost dolphin received anode retrofits. One Retrolink™ anode string was installed on each dolphin and CP measurements were recorded to verify proper operation of both CP retrofits. A waterside survey indicated that the Retrolinks™ were successfully installed and all potentials taken after installation indicated the dolphins were cathodically protected.

More info at www.stoprust.com



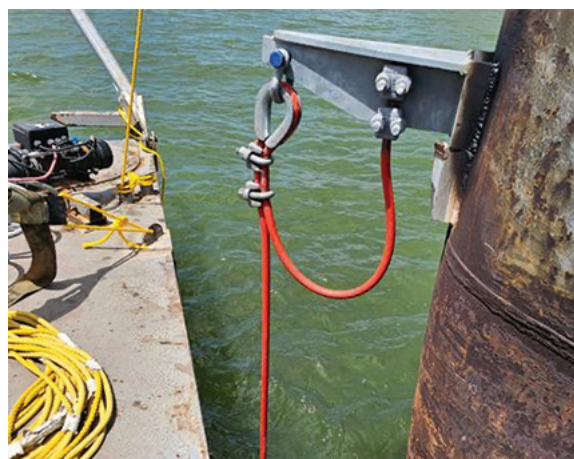
RUGGED CONSTRUCTION

Sturdy attachment from leader to anode string cable.



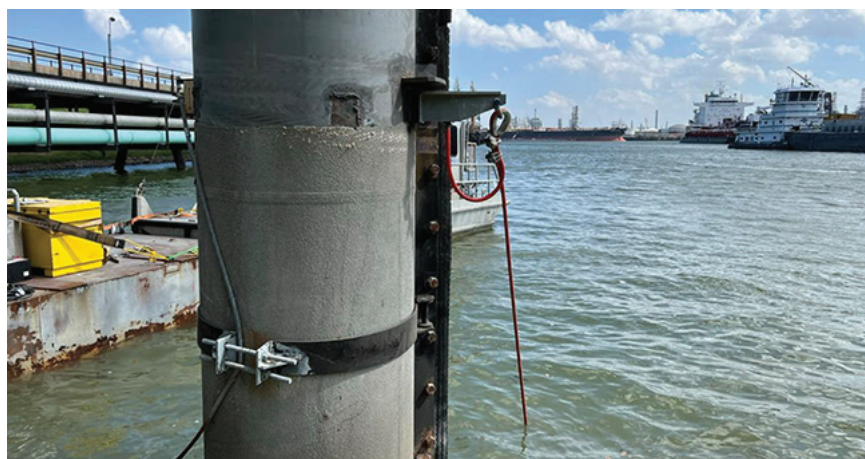
RAPID INSTALLATION

The crew deploys the Retrolink™ anode strings, which will lie on the seabed in a straight line.



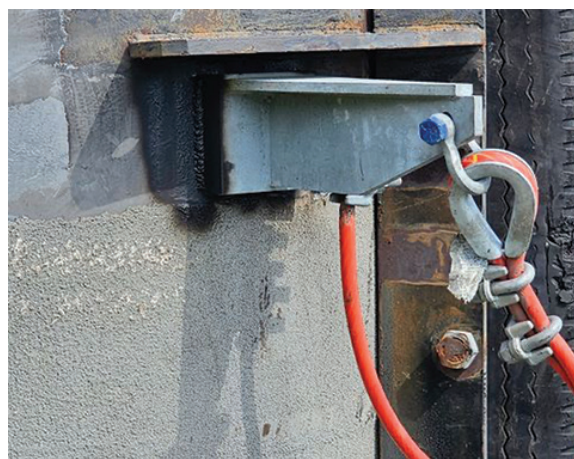
EASY ANODE MOUNTING

The topside suspension assembly can be affixed to horizontal or vertical members.



NEW HANGOUT

A new hangoff bracket was welded to the northernmost dolphin to mount the Retrolink™.



DURABLE ATTACHMENT

Retrolinks™ typically continue performing even after major storms.