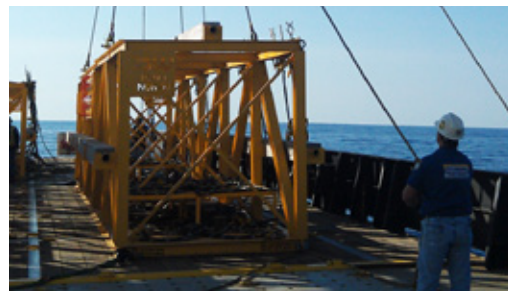


## Way ahead in corrosion control

### Life extension for aging assets

#### Cathodic protection system manufacturing

Deepwater designs and manufactures cathodic protection systems for offshore and marine assets, specializing in the development of innovative retrofit technology for aging assets in need of life extension. Deepwater has successfully retrofit more offshore cathodic protection systems than any other company. Over the last two decades, our cathodic protection systems have been designed to provide a more efficient and affordable alternative to traditionally installed anode systems by incorporating new ideas to streamline installation and reduce overall project costs.



### Design and engineering

#### CP analysis and evaluation

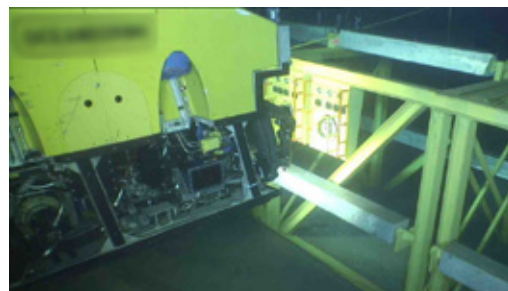
Though we specialize in retrofitting aging cathodic protection on most types of offshore assets, we also provide a full range of corrosion consulting services for unique cathodic-protection problems. We have an extensive résumé of failure analysis and diagnostic consulting services, as well as traditional cathodic-protection design and evaluation. Over the years, we have seen and corrected almost every type of cathodic protection design error or corrosion mishap. If your corrosion problem is more specific or complex, we can find the solution.



### Permanent monitoring systems

#### Allows monitoring of CP systems anytime

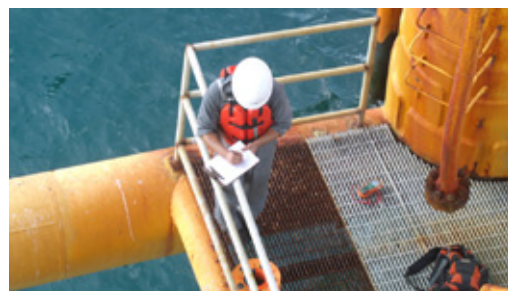
Deepwater manufactures a selection of permanent monitoring systems that provide a constant, reliable stream of information about corrosion control systems. A monitoring system comprises two main components: Fixed instruments and readouts. The DR-2 (dual reference electrode) and V-String (zinc electrode) are our standard electrodes for collecting cathodic protection potentials. Deepwater has developed a subsea readout called the SunStation (shown), which requires no outside power source or interface with the surface.



### Risk-based corrosion inspection services

#### Topside, subsea and in-service inspections

Deepwater began doing platform inspections in 1988, the very year the MMS-required "Level I" was born, and we have focused on continually improving the value of our inspection services. The basic format for most Level I surveys in the Gulf of Mexico was developed by Deepwater. Our multi-point, risk-based inspection procedure and reporting help operators spend inspection funds wisely, keep costs low and ensure staff safety. Deepwater has been heavily involved in Level II – IV surveys for over 21 years.



### Polatrak™ and I-Rod®

#### Polatrak™ CP probes and I-Rod® anti-corrosion pipe supports

Deepwater manufactures a full line of CP probes for use with divers, ROVs and topside inspections. Polatrak's product line includes the industry-standard CP-Gun and the ROV II, the world's most widely-used tip-contact probe.

Deepwater also developed the I-Rod® brand of pipe supports to prevent crevice corrosion due to trapped moisture, which helps ensure a long, safe life for pipelines by eliminating the crevice between the pipe and the support.

More info at [www.stoprust.com](http://www.stoprust.com)

