

# POLATRAK®

## CATHODIC PROTECTION MONITORING DR-2™ AND DR-2 CD™ (CP POTENTIAL /CURRENT DENSITY SENSOR)

**The DR-2 utilizes both zinc and silver / silver chloride reference electrodes for accuracy and longevity.**

The Polatrak DR-2 CD combines a standard DR-2 dual-element reference electrode with a 1 sq. m current density monitor to provide a compact package that gives accurate polarization data from a single instrument. It can be hardwired to a surface location or read subsea with a SunStation readout.

The sintered Ag/AgCl reference electrode provides very accurate potential data for monitoring the polarization of a structure. The heavy-duty zinc-electrode element provides a reliable, long-term data source alongside the more accurate (but volatile) silver chloride. Polatrak systems give you the option to tie into communication lines to provide remote cathodic protection monitoring through the existing infrastructure. At Deepwater, we machine all of our polymer components in-house, allowing us to provide extensive QA/QC for all of our products.

Use of permanent monitoring systems is growing, spurred by increased integrity emphasis and the ease of data telemetry. The DR-2 CD represents the latest innovation in cathodic-protection monitoring from the world's leading supplier of these systems.

### Reduces the need for subsea inspection

Structures with permanent cathodic protection monitoring systems can be inspected subsea much less frequently because they have the ability to perform interval surveys with a simple voltmeter.

### Pre-installed

The rugged design allows the DR-2 CD to be reliably welded to any new structure and wired to the surface at a minimal cost prior to the structure's deployment.

### Reliable, rugged conductor cable

The double steel-wire armored cable can be free-routed on offshore structures with simple bands or cable clamps, saving the cost of conduit or duct systems. The signal conductor for each of the reference electrodes, as well as the current density monitor, are all contained in a single cable.

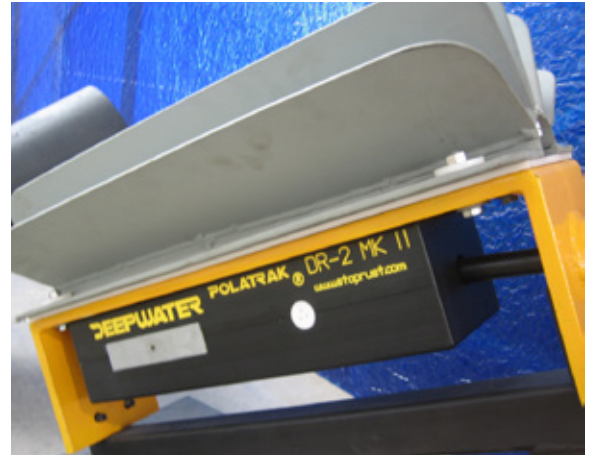
### Dual elements (Zn and Ag/AgCl)

The dual elements combine the high accuracy +/- 0.005 V of the silver / silver chloride electrode with the proven longevity of the zinc electrode, making this the most efficient reference cell available.

### DR-2 reference cell or DR-2 CD polarization monitor

For cathodic-protection potentials, the DR-2 is the industry-standard offshore dual reference cell. The DR-2 CD (reference electrodes combined with the current-density monitor fin) allows the operator to calculate data about the polarization of the structure, which can be extremely important for asset integrity managers and corrosion engineers.

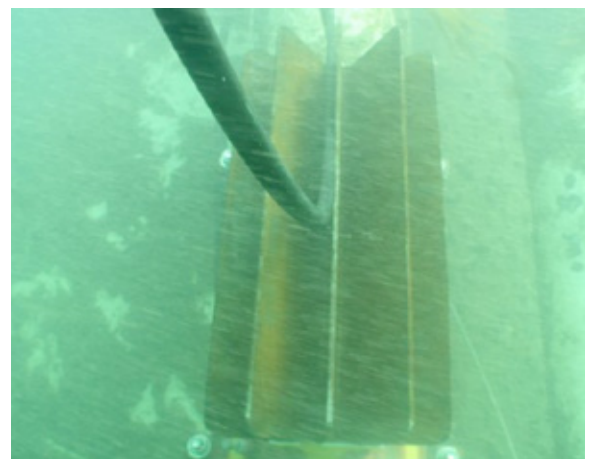
More info at [www.stoprust.com](http://www.stoprust.com)



**THE DR-2 CD COMBINES TWO INSTRUMENTS:**  
A DR-2 reference cell (yellow and black) and current-density monitor (top fin).



**RETROFITS**  
DR-2 to be retrofitted to a subsea pipeline attached to two RetroClamps.



**INSTALLATION**  
An installation (DR-2 CD) in progress on an offshore wind turbine.