

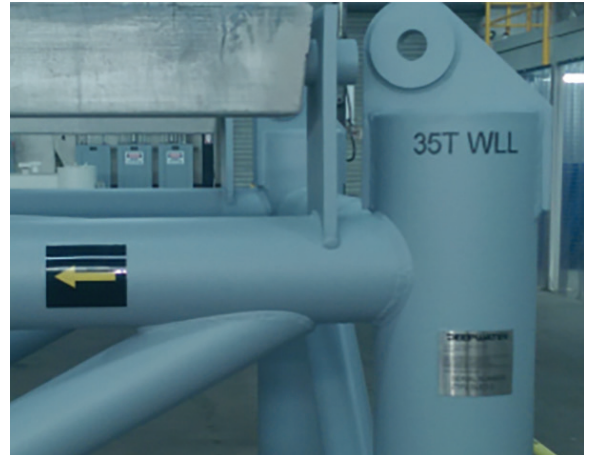
DEEPWATER

EXTRA-HEAVY DUTY ANODE SLEDS FOR HIGH WATER CURRENT USE: U.S GOVERNMENT

Deepwater builds heavy-duty anode sleds for use in high water currents

Deepwater was contracted by the U.S. Government to build two cathodic protection (CP) sleds. Due to hydrographic and customer requirements, the final sled configuration is very robust. The sleds have a design life of 20 years with placement in a high water current environment, and these conditions dictated the use of high-strength piping as opposed to more traditional rectangular steel components. A spare set of anodes was purchased for replacement at the end of design life. The sled allows for changing of the anodes through the use of simple cutting and welding methods.

More info at www.stoprust.com



BUILT TO SPEC
The sleds were made to meet the U.S. Government's contract requirements.



BUILT FOR CHALLENGING ENVIRONMENTS
Deepwater has also built heavier than usual RetroBuoys™ for use in high water-current areas.



VERY HEAVY DUTY SLEDS
Spare anodes were purchased as replacements for the originals in 20 years.



CUSTOM DESIGN
In addition to our standard designs, Deepwater can build anode sleds tailored for use in special conditions.



TUBULAR DESIGN
High-strength piping was used in the construction of both sleds.