

DEEPWATER

RETROLINK™ ANODE STRINGS INSTALLED: CAMERON, GULF OF MEXICO

Six anode strings provide CP for Apache's EC-2-C structure.

Deepwater installed six RetroLink™ anode strings on Apache's EC-2-C 4-pile structure in the Gulf of Mexico. The platform sits in less than 30 feet of water and required 42-foot RetroLinks™ to be suspended from horizontal standoffs welded to tubular members above the water line. Total time for job completion – including travel – was six hours.

More info at www.stoprust.com



SUITED TO SHALLOW STRUCTURES

RetroLinks™ are suitable for use in depths less than 85 feet.



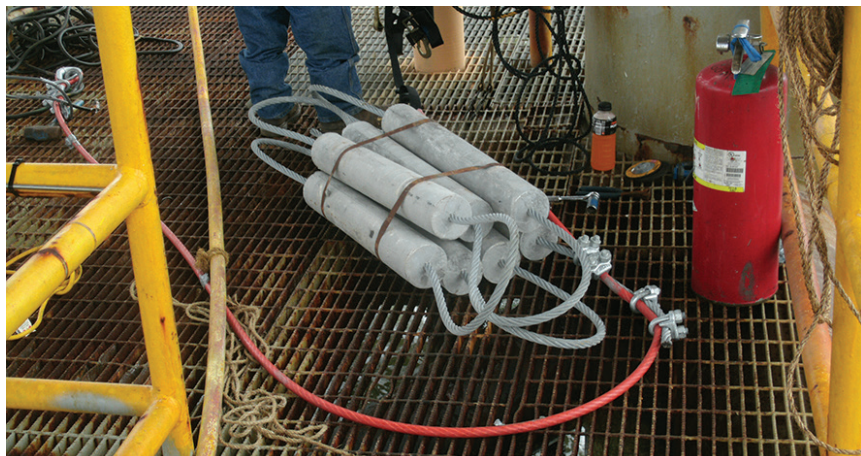
SIMPLE DESIGN

RetroLinks™ mechanically and electrically above the water line. Supports can be bolted or welded to the structure.



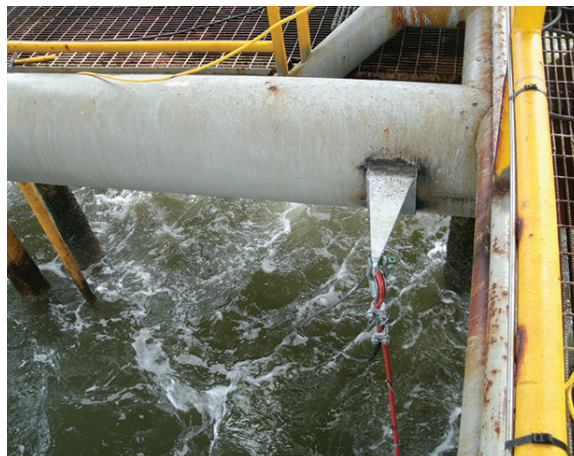
POPULAR CHOICE

More than 500 structures in the Gulf of Mexico are protected by RetroLinks™.



RAPID INSTALLATION

Six RetroLinks™ were installed in six hours, which included travel time.



STORM-TESTED

RetroLinks™ are consistently able to endure major storms and hurricanes.