

DEEPWATER

RETROCLAMPS™ USED ON 8" PIPELINE ANODE SLED RETROFIT: ARABIAN GULF NEAR ABU DHABI

25 RetroClamps™ were deployed to electrically connect retrofit anode sleds.

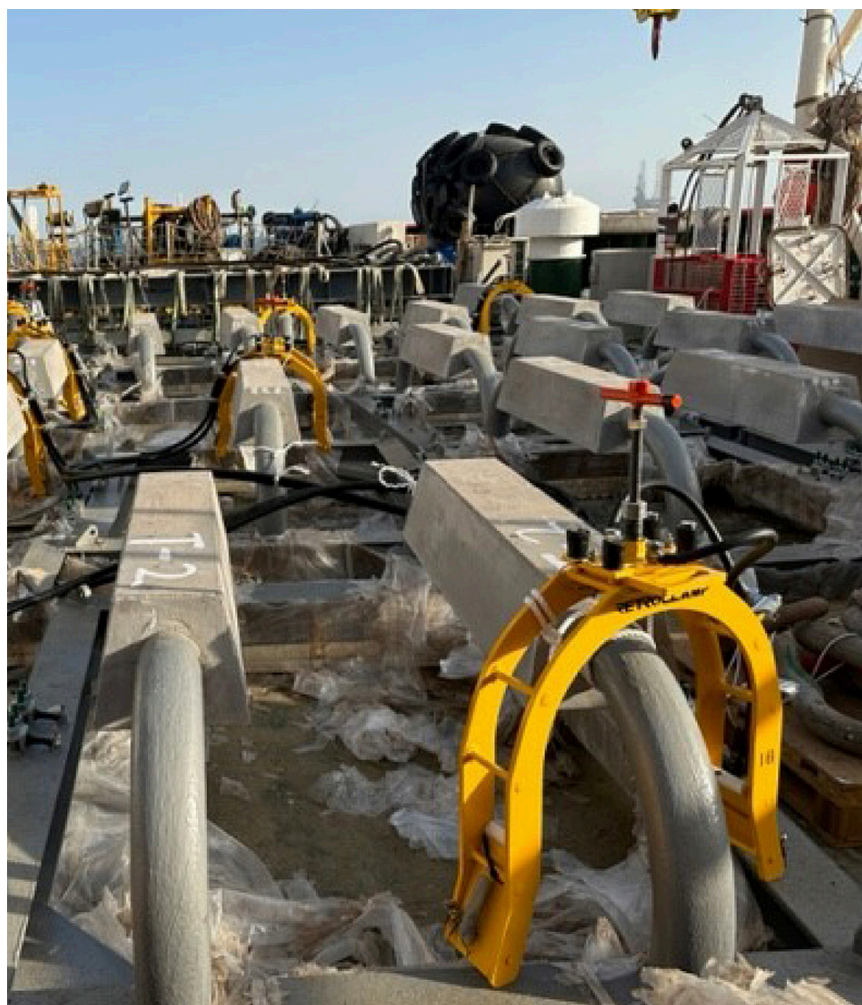
Deepwater EU Ltd provided a CP retrofit system in the Arabian Gulf northwest of Abu Dhabi for an existing 8-inch CS pipeline from the wellhead platform to the central processing complex. The retrofit included engineering design of retrofit anodes as specified, and 25 RetroClamps™ to electrically connect the anodes to the pipeline. The RetroClamps™ were manufactured by Deepwater, but the anode sleds used in this installation were manufactured elsewhere.

RetroReaders™ were used to ensure continuity for all clamps during installation, which was overseen by a Deepwater representative.

More info at www.stoprust.com



AN ANODE SLED BEING LOWERED INTO PLACE
The RetroClamp™ will electrically tie it to the pipeline.



RETROCLAMPS™, ALREADY CONNECTED TO THE ANODE SLEDS, AWAIT DEPLOYMENT
The RetroClamps™ were provided by Deepwater and the sleds shown were manufactured elsewhere.



RAPID INSTALLATION
A RetroClamp™ can be installed in minutes by diver or ROV.



DESIGN LIFE OF 25 YEARS
Electrical contact can be made even through concrete weight coating.